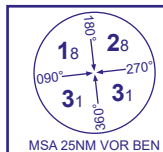


INSTRUMENT APPROACH CHART - ICAO

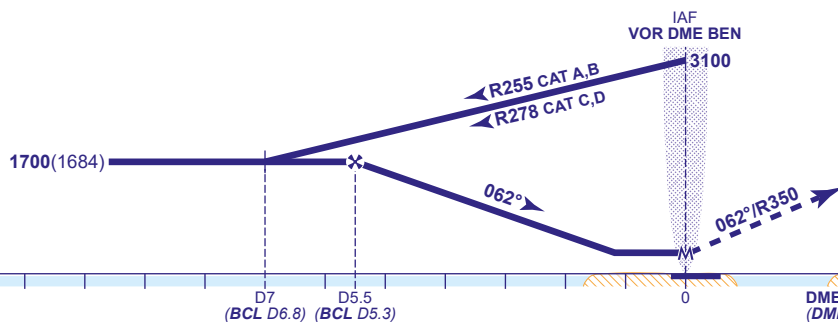
BENBECULA
VOR/DME
RWY 06
(ACFT CAT A,B,C,D)

APP	119.205	BENBECULA APPROACH	AD ELEVATION	19
TWR	119.205	BENBECULA TOWER	THR ELEVATION	16
AFIS	119.205	BENBECULA INFORMATION	OBSTACLE ELEVATION	79 AMSL (63)(ABOVE THR)
ATIS	129.885	BENBECULA INFORMATION	BEARINGS ARE MAGNETIC	

TRANSITION ALTITUDE
3000

RECOMMENDED PROFILE Gradient 5.1%, 310FT/NM

DME BEN (BCL)	5(4.8)	4(3.8)	3(2.8)	2(1.8)
ALT(HGT)	1540(1524)	1230(1214)	920(904)	610(594)



MAPt VOR BEN

Climb straight ahead to 520, then climbing turn left to intercept and track VOR BEN R350. After passing 1700, climbing turn left to return to VOR BEN at 3100.

Aircraft Category	A	B	C	D	Rate of descent	G/S KT	160	140	120	100	80
OCA (OCH)	Procedure	360(344)	360(344)	360(344)	360(344)	FT/MIN	830	720	620	520	410
VM(C)OCA (OCH AAL)	Total Area	470(451)	710(691)	810(791)	810(791)						

ALTERNATIVE PROCEDURE (PROCEDURE TURN REVERSAL)
Overhead VOR DME BEN (IAF) at 3100, fly outbound on R242 descending to 1700(1684). At BEN DME 5 (BCL D4.8) procedure turn right onto extended FAT. When established, continue as for main procedure.

- NOTES**
- FAT is offset 4.3° from RWY 06 C/L.
 - Procedures interact with Danger Areas EGD701A, 701B, 701C, 701Y and EGD704. Procedures available subject to ATC permission.
 - Base Turn and Procedure Turn for CAT C and D aircraft are based on 250KIAS to accommodate military aircraft.

CHANGE (1/26): EGD714A/B ADDED.